



# Service Notice SN0009

Date: June 2004  
From: Capstone Technical Support  
Subject: PM Programming of LCM and BCM Control Boards

---

## Affected

Model C60 installations configured with the Stand Alone option.

## Summary

Capstone has identified that the current CRMS PM Write drop down menu for the BCM Control Board does not allow selection of new board (P/N 511711-101). This inability to electronically display the current configuration does not hinder MicroTurbine operation or cause the system to malfunction. However, failure to correctly identify the new board may cause traceability issues if BCM service is later required.

Historically, PM programming was performed at the LCM and BCM assembly level and device selections were available only for the LCM, LCM\_CB and BCM. This was because the previous Control Board (P/N 511710-100) was used in both the LCM and BCM assemblies. As such, the PM Programmer software provided only a LCM\_CB drop down selection. Version 2.09 of the PM Programmer expands the programming capabilities of the PM Write menu to allow a BCM\_CB selection (see Figure 1).

CRMS version 4.41 (or later) is required to enable the programming of the BCM\_CB properly. Both the CRMS software version 4.41 and the PM Programmer version 2.09 are available from the Member's Only website. Refer to the CRMS Maintenance Edition Technical Reference Chapter 8: "PM Uploading" document for further details on the PM Write functionality of CRMS.

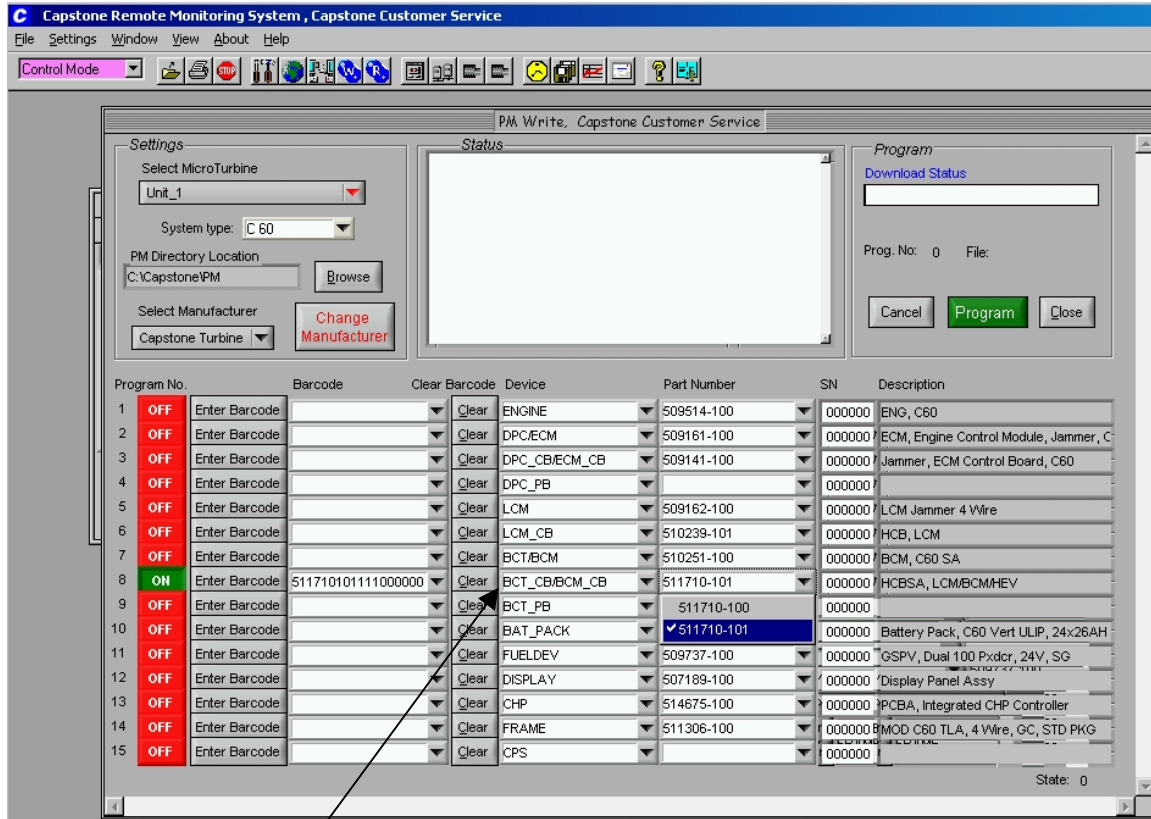
The new procedure for programming a BCM or LCM Assembly and/or Control Board is as follows:

### Programming of a BCM:

- Program the BCM (Assy P/N and S/N found on the BCM packaging)
- Program the BCM\_CB (Assy P/N and S/N found on the barcode label of the Control Board inside the BCM).

### Programming of an LCM:

- Program the LCM (Assy P/N and S/N found on the LCM packaging)
- Program the LCM\_CB (Assy P/N and S/N found on the barcode label of the Control Board inside the LCM).



Select "BCM Control Board"

Figure 1. CRMS "PM Write" Screen

## Capstone Technical Support

If you have additional questions, please contact:

<p><b>Capstone Technical Support</b>                  Telephone: (818) 407-3600                  Facsimile: (818) 734-1080                  Toll Free Telephone: (877) 282-8966                  E-mail: <a href="mailto:service@capstoneturbine.com">service@capstoneturbine.com</a></p>	<p><b>Capstone Technical Support - Japan</b>                  Telephone: (818) 407-3700                  Facsimile: (818) 734-1080                  E-mail: <a href="mailto:servicejapan@capstoneturbine.com">servicejapan@capstoneturbine.com</a></p>
---	--